

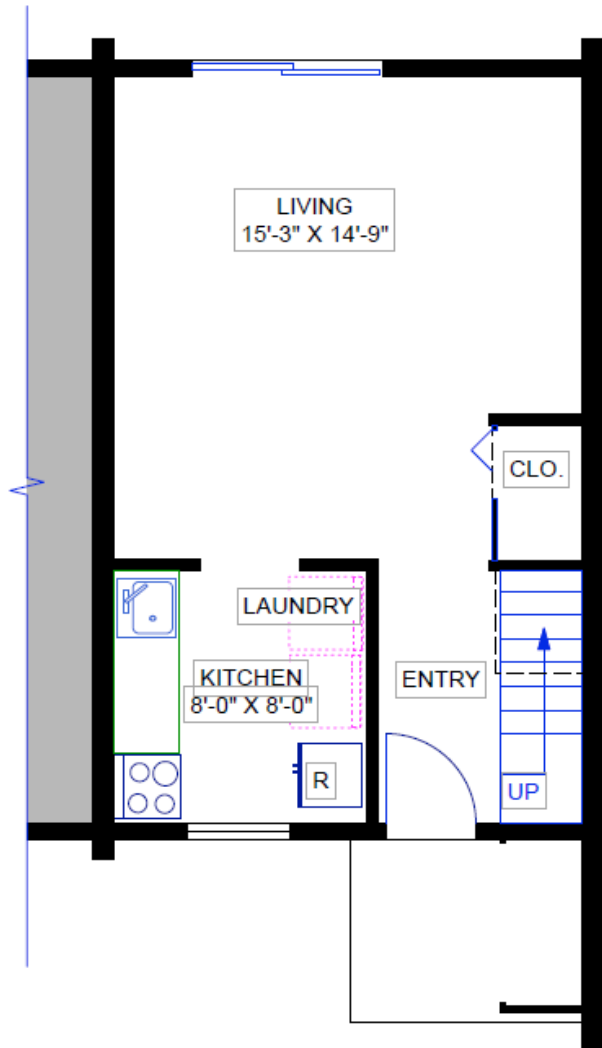
Sachem Village Housing By Unit Type (Total Inventory*)

Apartment Type	Sq Ft	No. of Apts	No. of Beds	No. of Baths	Washer/Dryer	Dish washer	Storage	Heat incl.	Hot Water Incl.	FY25 Base Market Rent Range
Field Road										
2-Bedroom Duplex	644	10	2	1	NO hook up- Laundromat on Haddock Ln	N	N	N	N	\$1,265
3-Bedroom Duplex	704	10	3	1	NO hook up- Laundromat on Haddock Ln	N	N	N	N	\$1,375
2-Bedroom Duplex - Renovated	704	4	3	1	NO hook up- Laundromat on Haddock Ln	Y	N	N	N	\$1,550
3-Bedroom Duplex - Renovated	644	2	2	1	NO hook up- Laundromat on Haddock Ln	Y	N	N	N	\$1,675
North Sachem										
2-Bedroom Townhouse	603	18	2	1	Hook Up Only - Side-by-Side	N	N	Y	Y	\$1,450
2-Bedroom Townhouse- Renovated	603	6	2	1	Stackable units included	N	N	Y	Y	\$1,650
Phase I										
1-Bedroom Triplex **	683	3	1	1	Hook Up Only - Side-by-Side	Y	Y	Y	Y	\$1600 - \$1675
2-Bedroom 4-plex Interior unit	1,025	22	2	1	Hook Up Only - Side-by-Side	Y	Y	Y	Y	\$2050 - \$2150
2-Bedroom 4-plex Exterior unit	1,025	32	2	1	Hook Up Only - Side-by-Side	Y	Y	Y	Y	\$2080 - \$2200
2-Bedroom 4-plex Interior unit	1,072	22	2	1	Hook Up Only - Side-by-Side	Y	Y	Y	Y	\$2150 - \$2240
2-Bedroom 4-plex Exterior unit	1,072	32	2	1	Hook Up Only - Side-by-Side	Y	Y	Y	Y	\$2180 - \$2290
3-Bedroom Duplex	1,380	14	3	1	Hook Up Only - Side-by-Side	Y	Y	Y	Y	\$3100 - \$3230
Phase II										
1-Bedroom 6-8 plex	720	22	1	1	Hook Up Only - Stackable	Y	Y	Y	Y	\$1695 - \$1765
2-Bedroom Triplex **	832	8	2	1	Hook Up Only - Stackable	Y	Y	Y	Y	\$1825 - \$1895
2-Bedroom Duplex	938	10	2	1.5	Hook Up Only - Stackable	Y	Y	Y	Y	\$2050 - \$2140
2-Bedroom Duplex	1,024	6	2	2.5	Hook Up Only - Stackable	Y	Y	Y	Y	\$2255 - \$2325
2-Bedroom 6-8 plex	1,026	14	2	1.5	Hook Up Only - Stackable	Y	Y	Y	Y	\$2175 - \$2265
2-Bedroom Duplex	1,032	2	2	1.5	Hook Up Only - Stackable	Y	Y	Y	Y	\$2175 - \$2265
3-Bedroom 6-8 plex	1,222	14	3	2	Hook Up Only - Stackable	Y	Y	Y	Y	\$2815 - \$2895
2-Bedroom Triplex	1,250	4	2	2.5	Hook Up Only - Side-by-Side	Y	Y	Y	Y	\$2750 - \$2845

*Total inventory means all the units at Sachem, not what is available at any given time to lease.

**Accessible Unit

Pets Permitted upon prior approval with additional monthly cost.



LIVING
15'-3" X 14'-9"

LAUNDRY

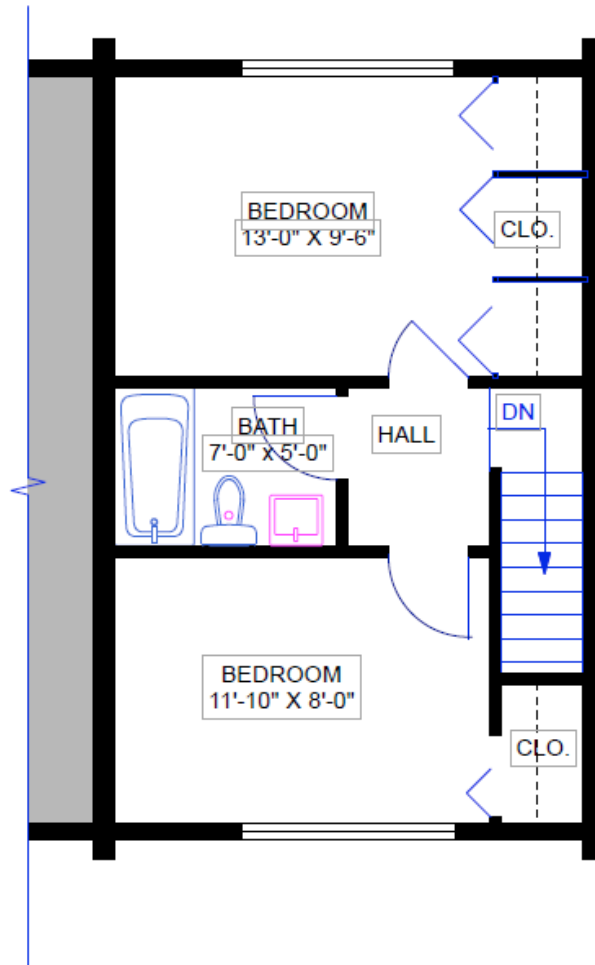
KITCHEN
8'-0" X 8'-0"

ENTRY

CLO.

UP

FIRST FLOOR



BEDROOM
13'-0" X 9'-6"

CLO.

BATH
7'-0" X 5'-0"

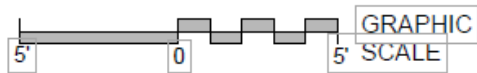
HALL

DN

BEDROOM
11'-10" X 8'-0"

CLO.

SECOND FLOOR

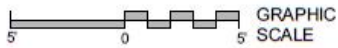
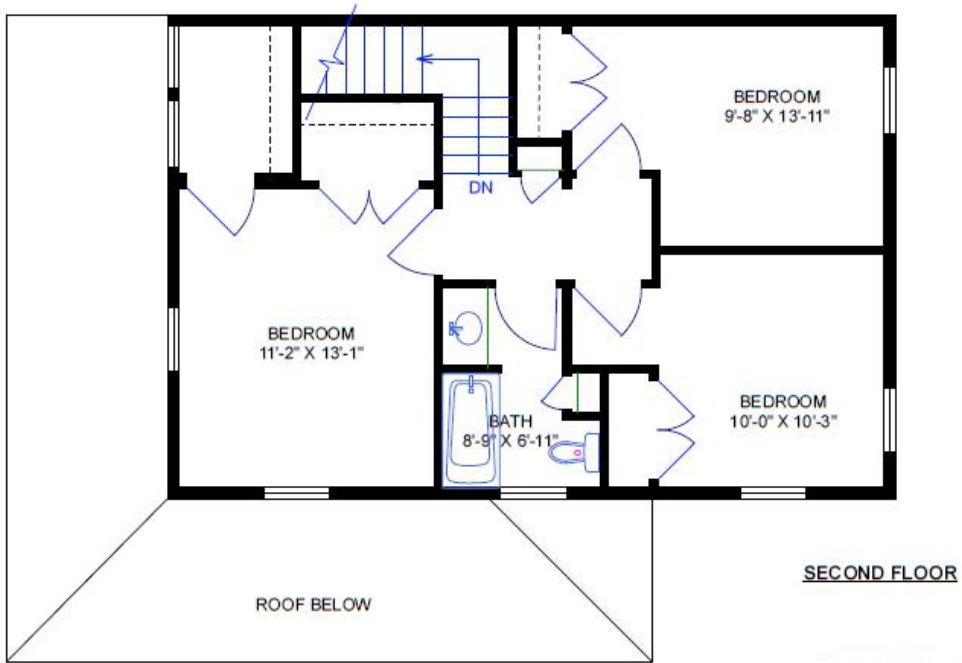


GRAPHIC
SCALE

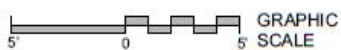
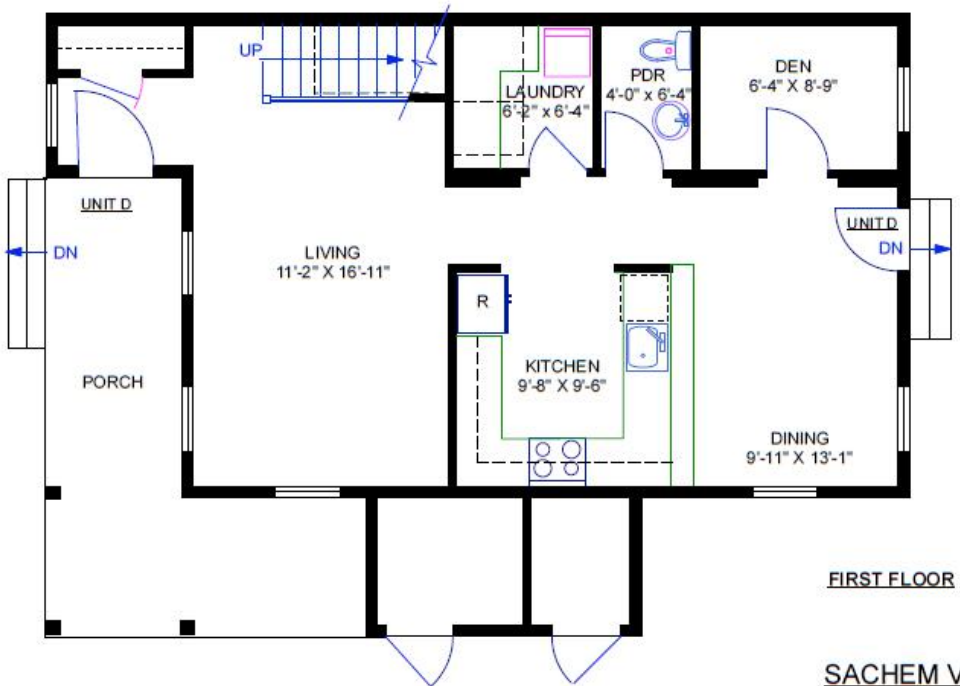
SACHEM VILLAGE



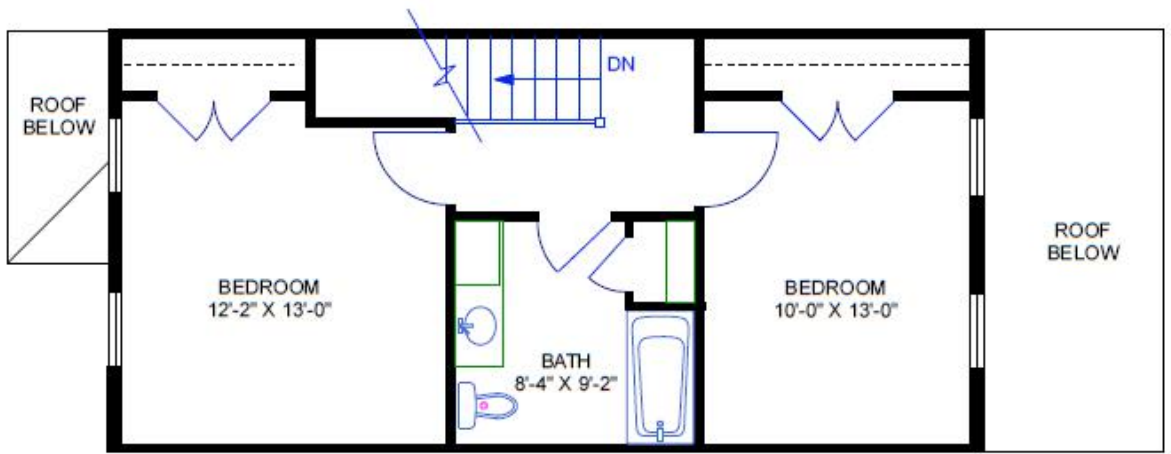
2 BRM UNIT W/ STORAGE
603 SQ. FT.



SACHEM VILLAGE
 UNIT E - 2 STORY
 1385 SQ. FT.

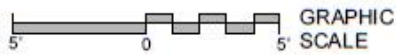


SACHEM VILLAGE
 UNIT E - 2 STORY
 1385 SQ. FT.



SECOND FLOOR

SACHEM VILLAGE

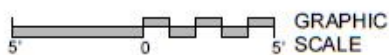


UNIT D - 2 STORY
1025 SQ. FT.

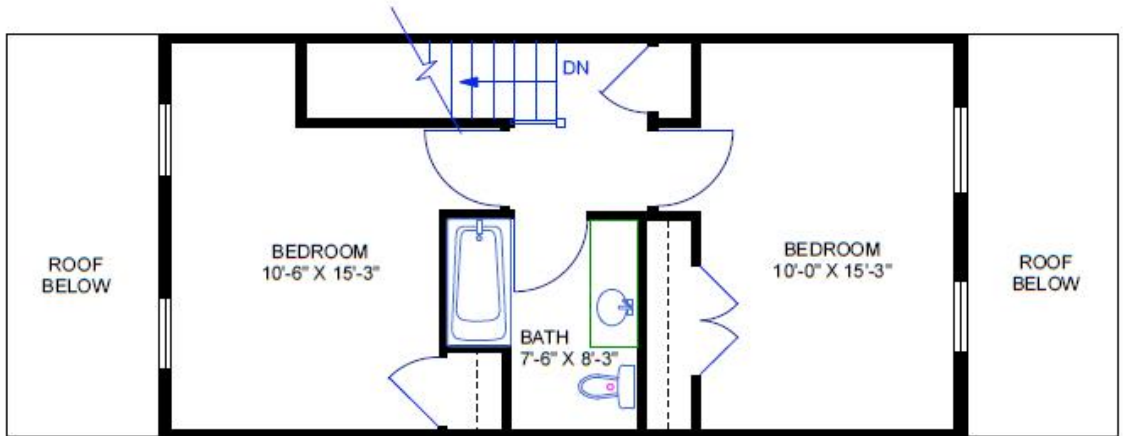


FIRST FLOOR

SACHEM VILLAGE

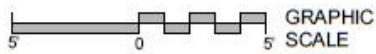


UNIT D - 2 STORY
1025 SQ. FT.

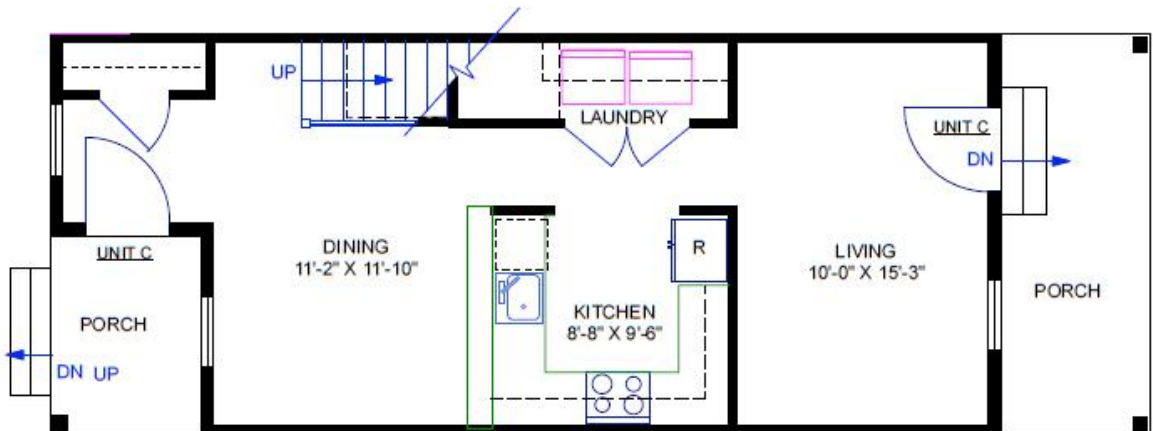


SECOND FLOOR

SACHEM VILLAGE

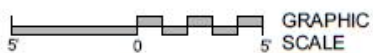


UNIT C - 2 STORY
1072 SQ. FT.

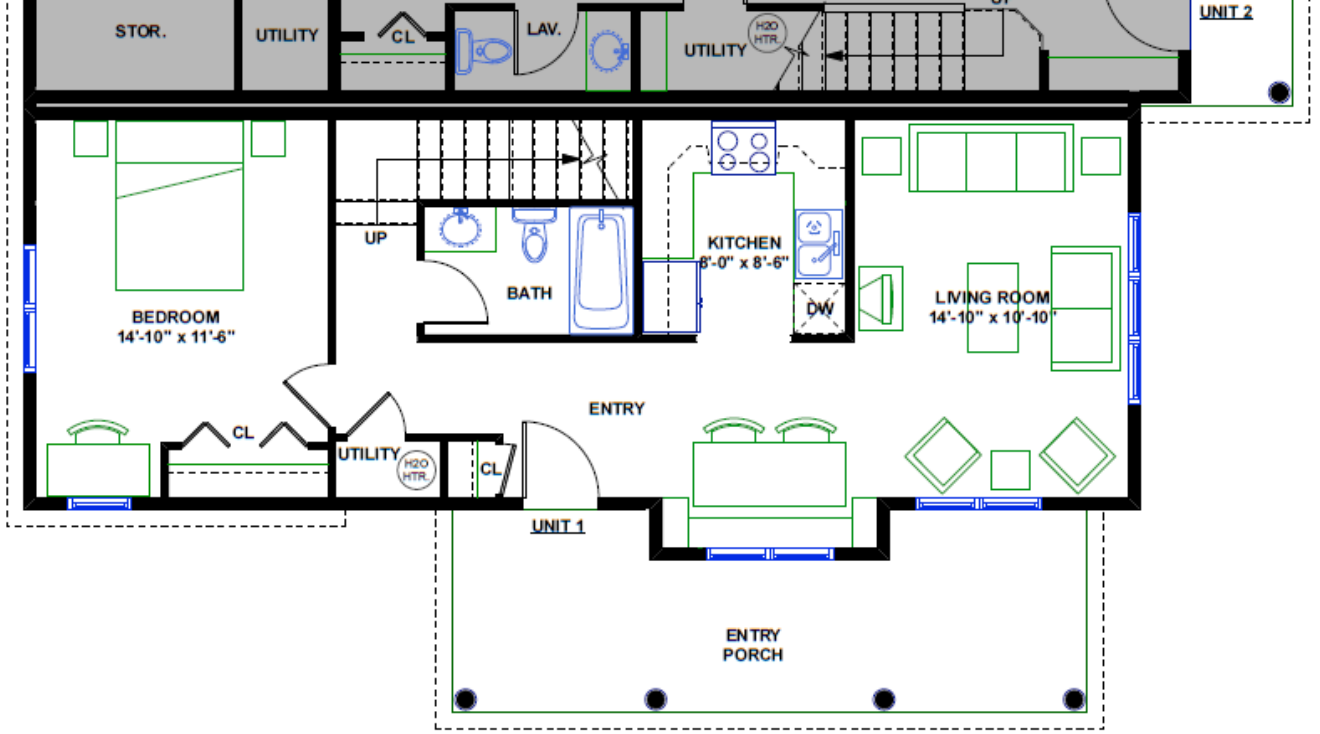


FIRST FLOOR

SACHEM VILLAGE



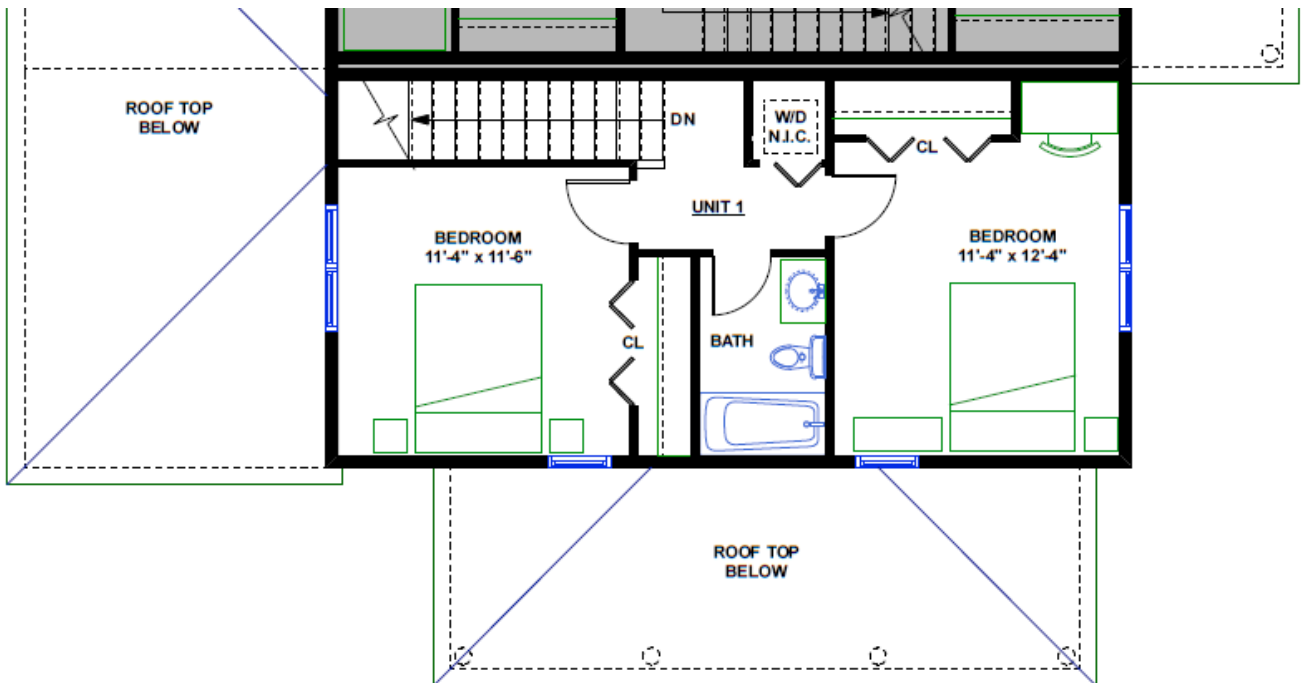
UNIT C - 2 STORY
1072 SQ. FT.



**UNIT 1 & 6 (Opp.)
(FIRST FLOOR)**

SACHEM NEIGHBORHOOD

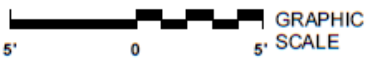
SIX-UNIT TOWNHOUSE
1222 SQ. FT. 3 BEDROOM UNIT



**UNIT 1 & 6 (Opp.)
(SECOND FLOOR)**

SACHEM NEIGHBORHOOD

SIX-UNIT TOWNHOUSE
1222 SQ. FT. 3 BEDROOM UNIT

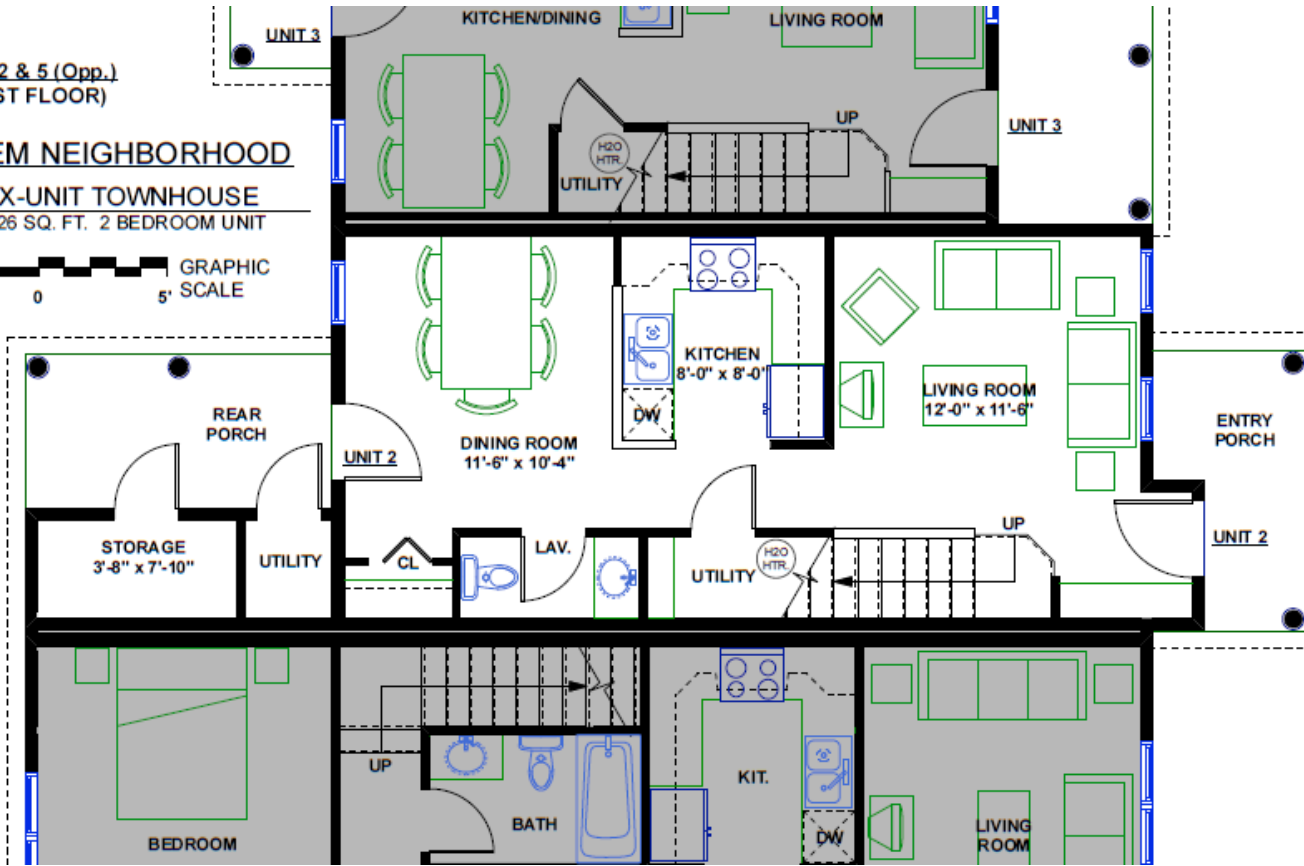


UNIT 2 & 5 (Opp.)
(FIRST FLOOR)

SACHEM NEIGHBORHOOD

SIX-UNIT TOWNHOUSE
1026 SQ. FT. 2 BEDROOM UNIT

5' 0 5' GRAPHIC SCALE

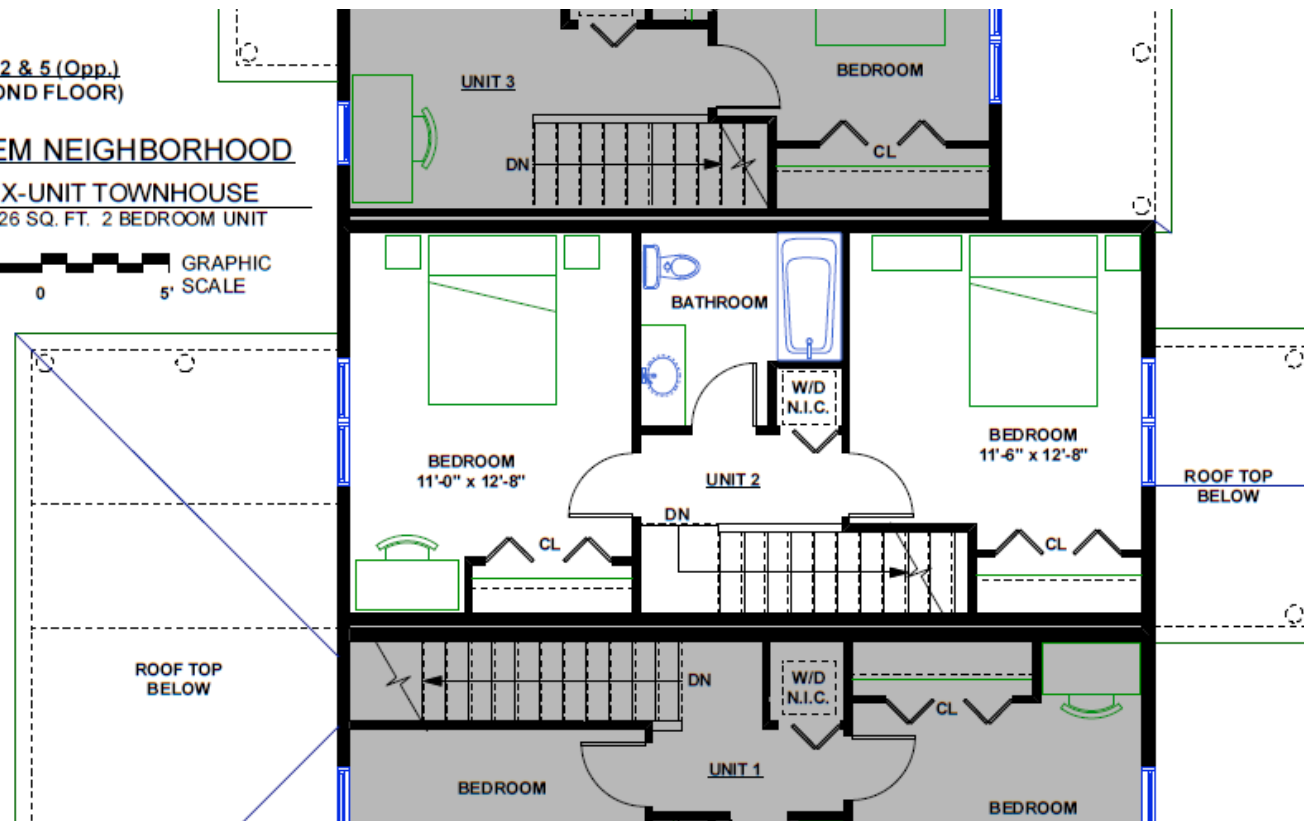


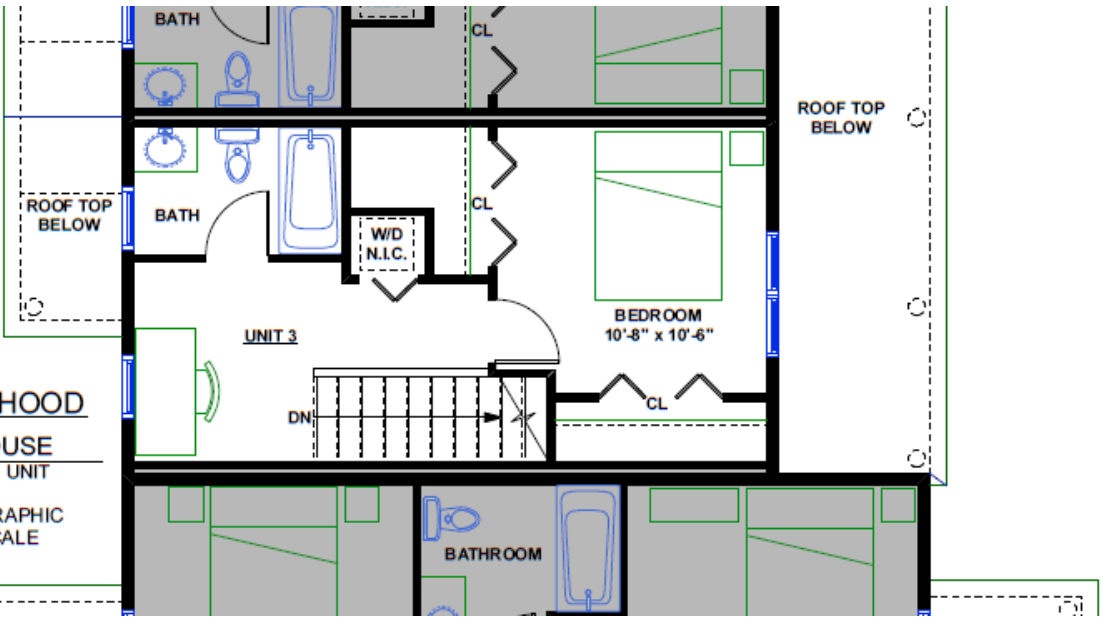
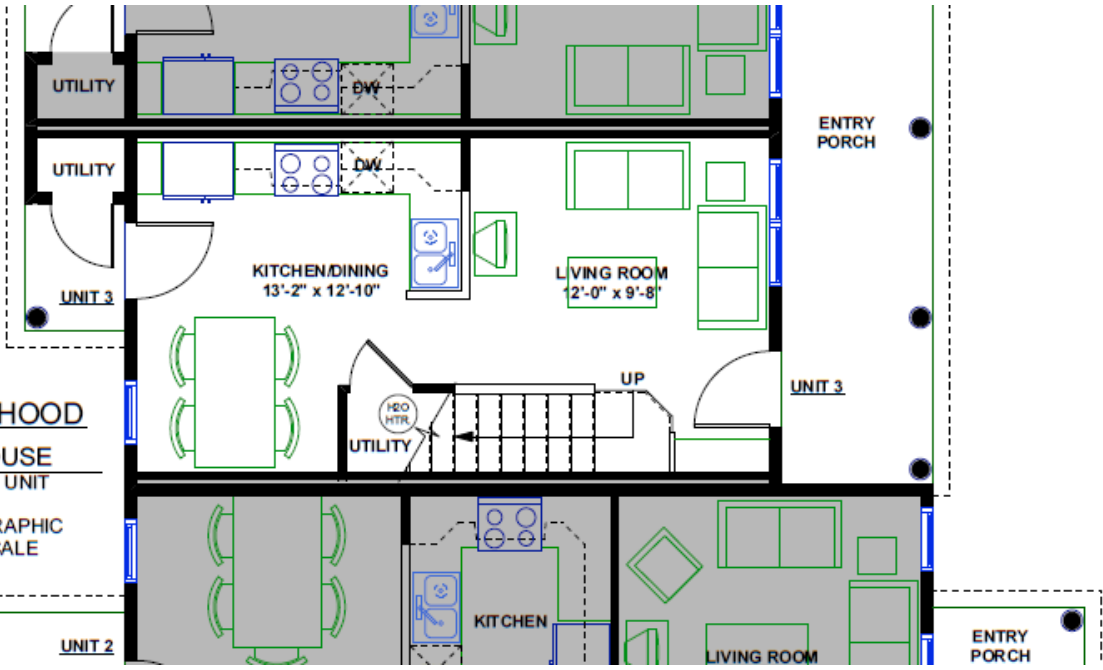
UNIT 2 & 5 (Opp.)
(SECOND FLOOR)

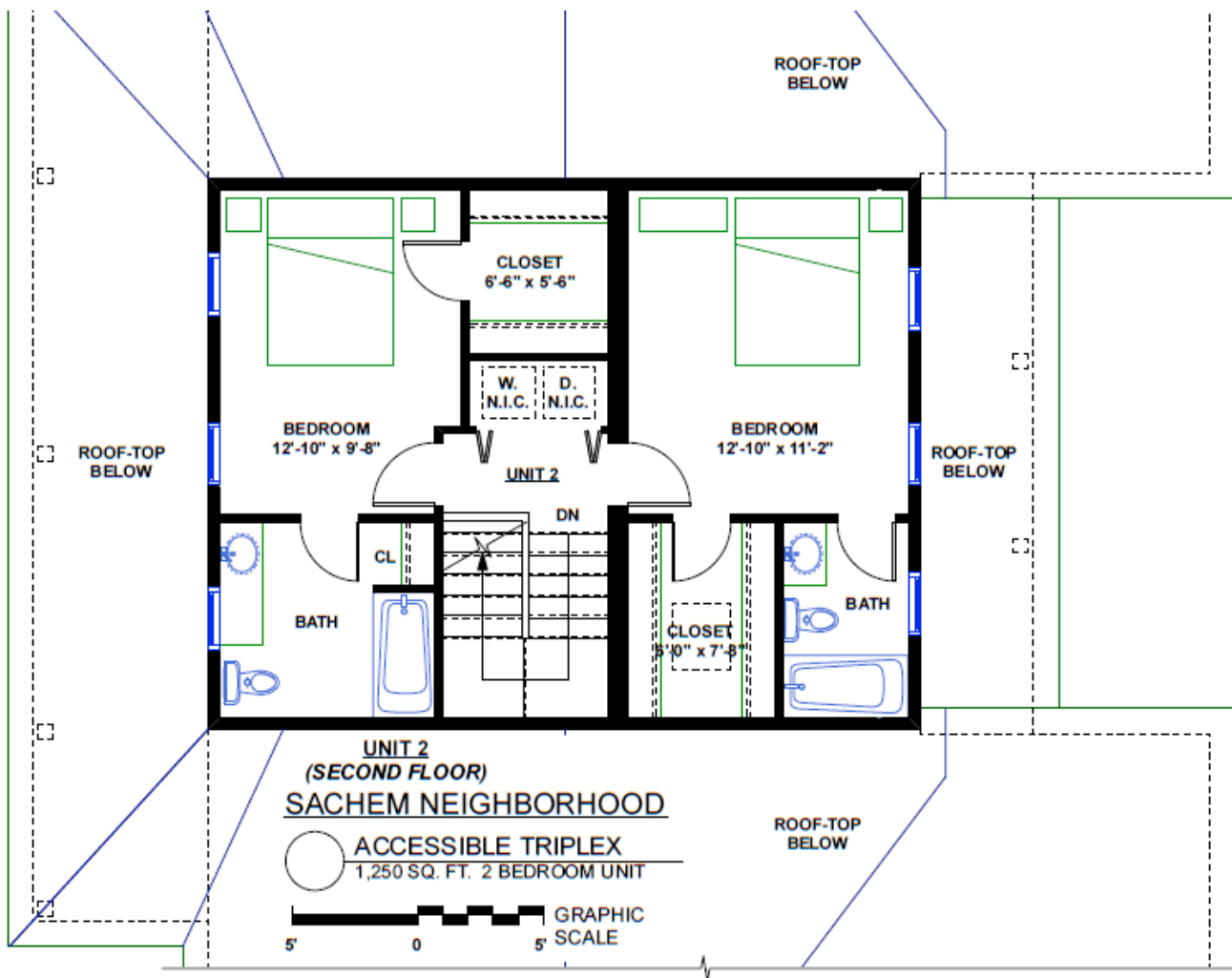
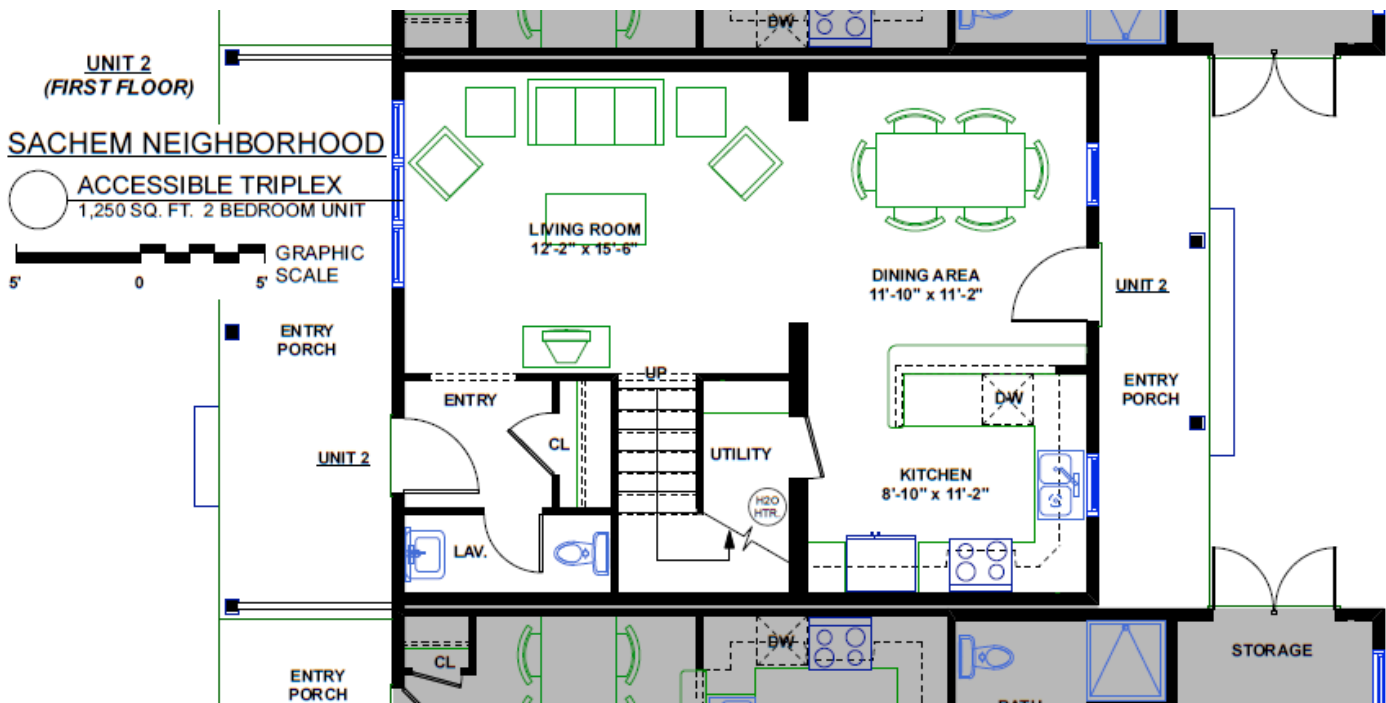
SACHEM NEIGHBORHOOD

SIX-UNIT TOWNHOUSE
1026 SQ. FT. 2 BEDROOM UNIT

5' 0 5' GRAPHIC SCALE



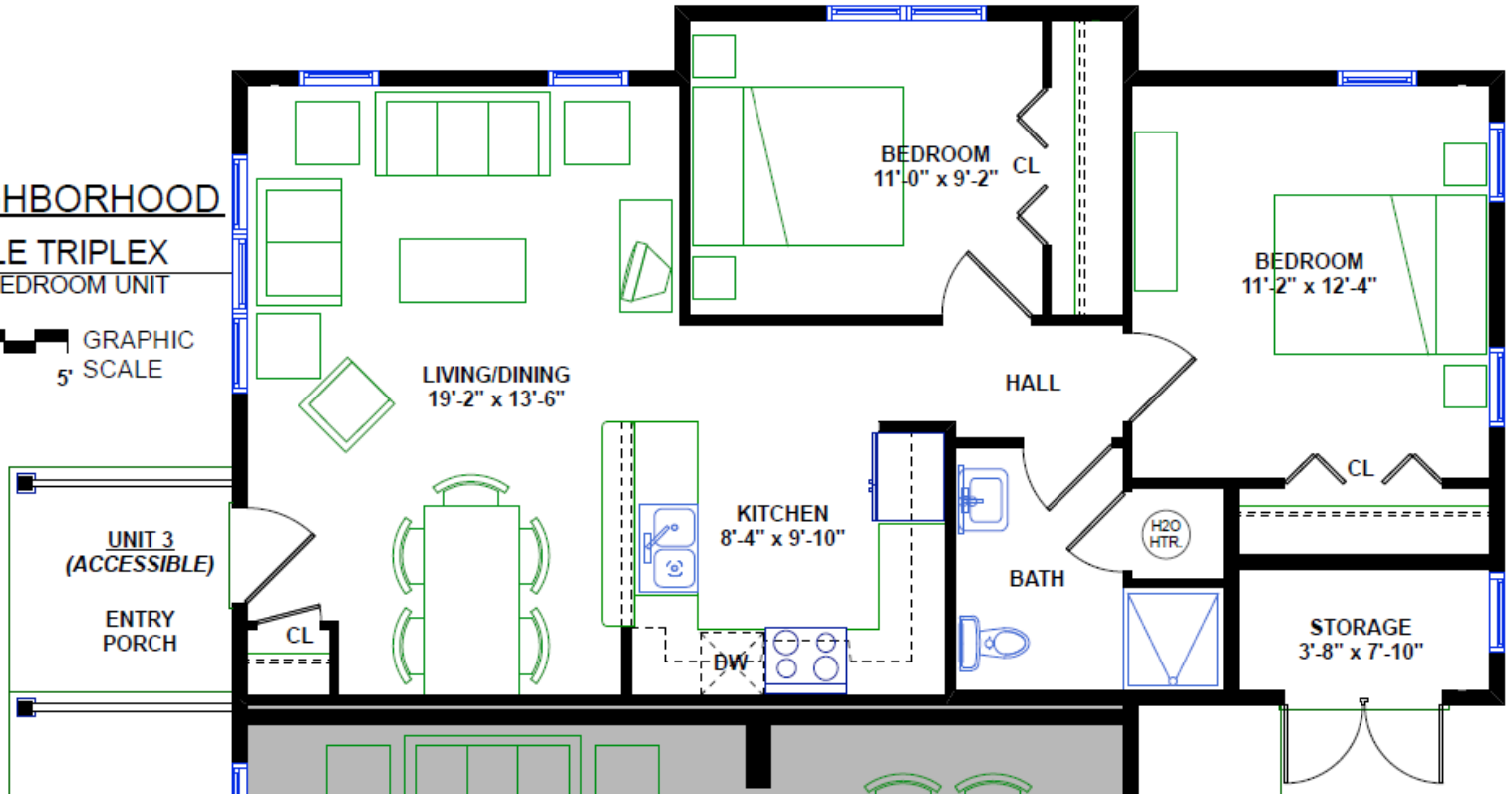
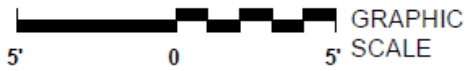


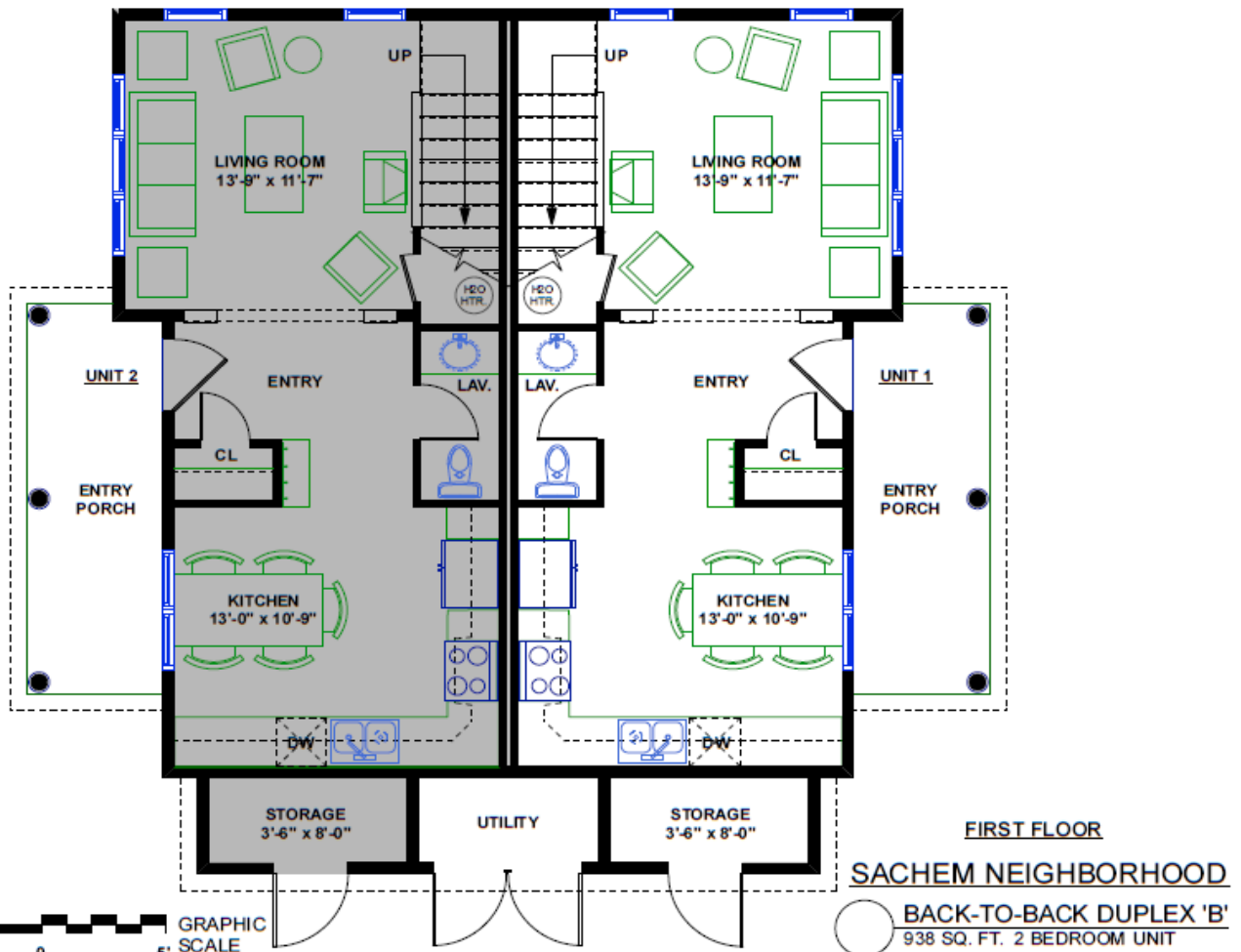
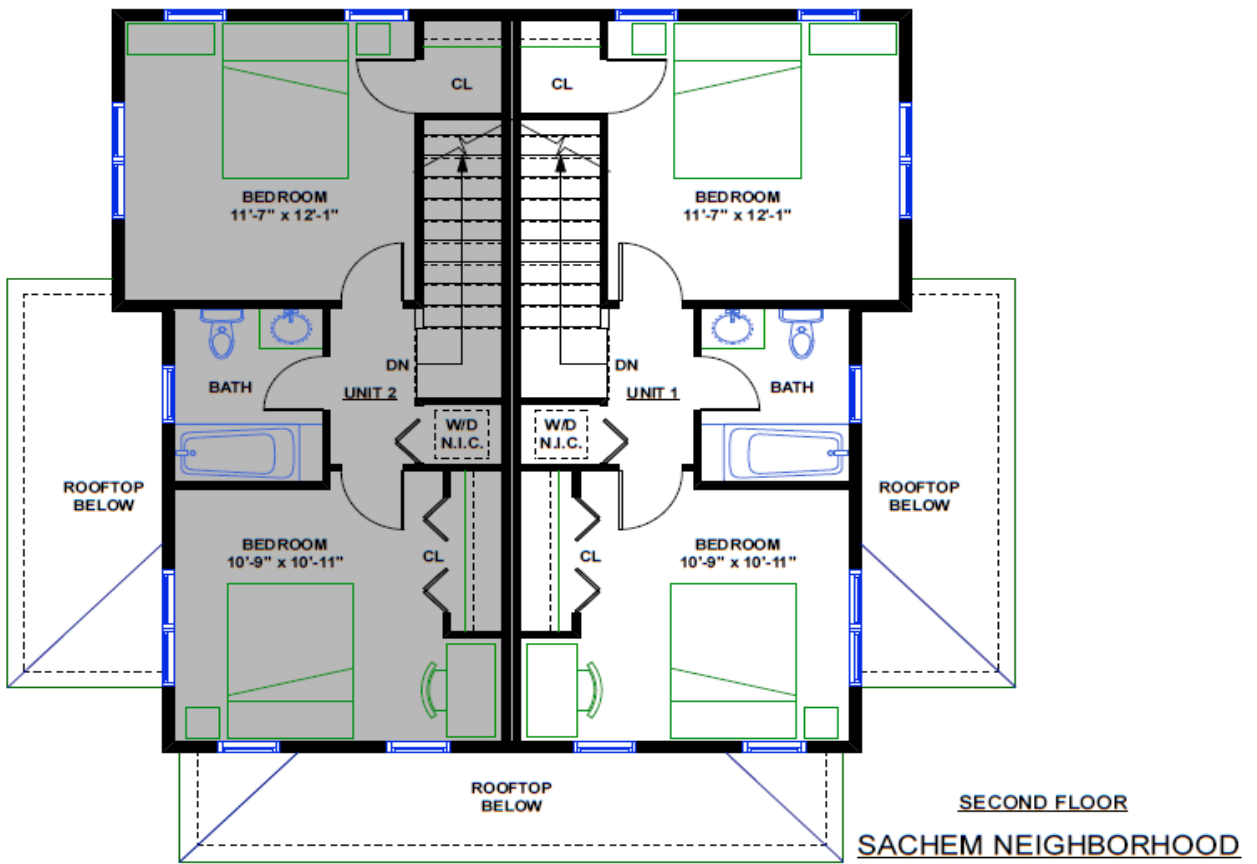


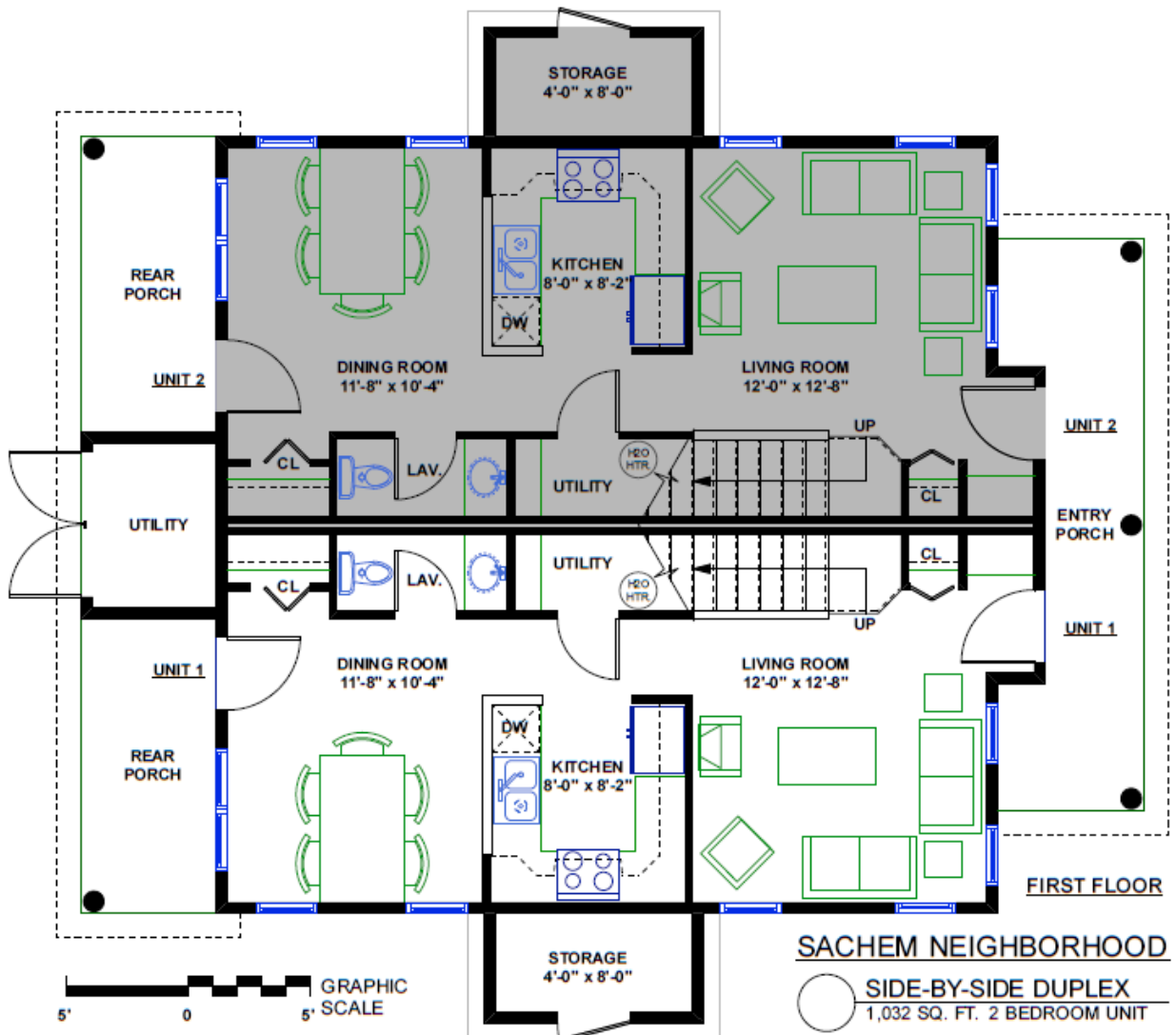
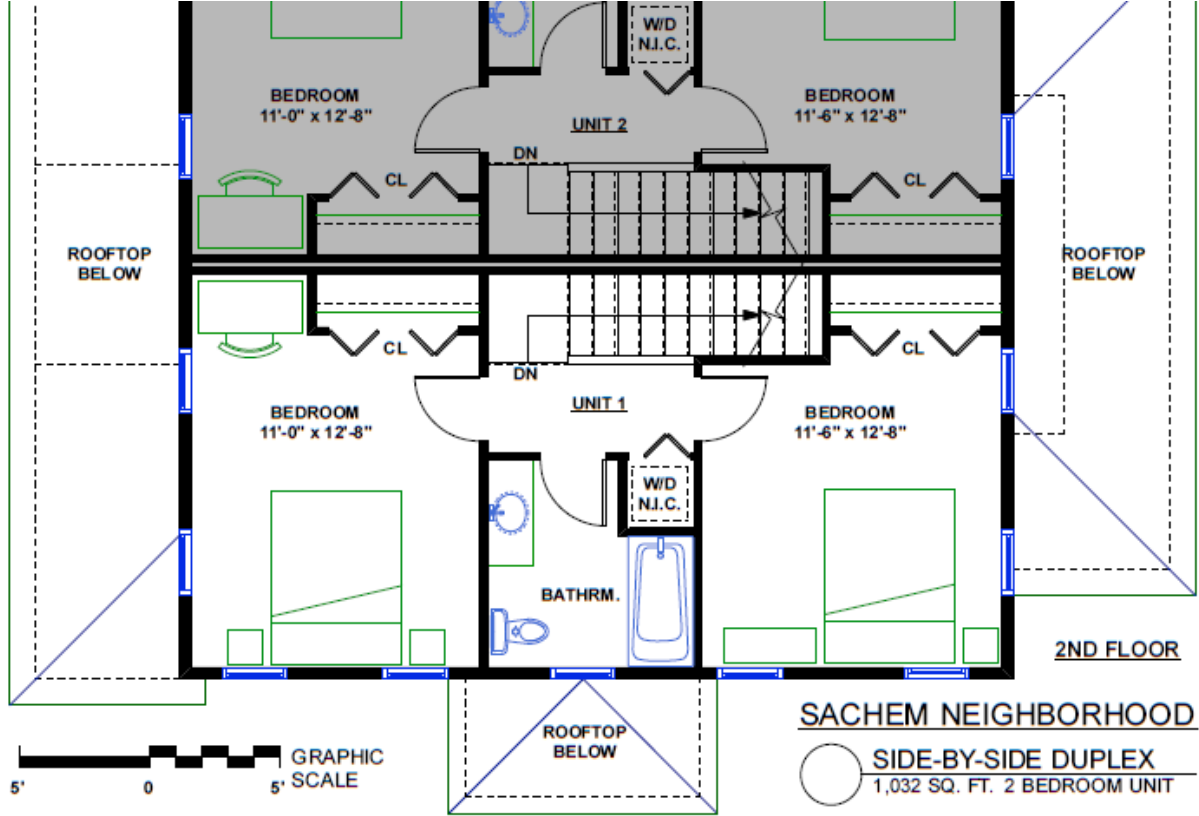
**UNIT 3 (1 OPP.)
(ACCESSIBLE)**

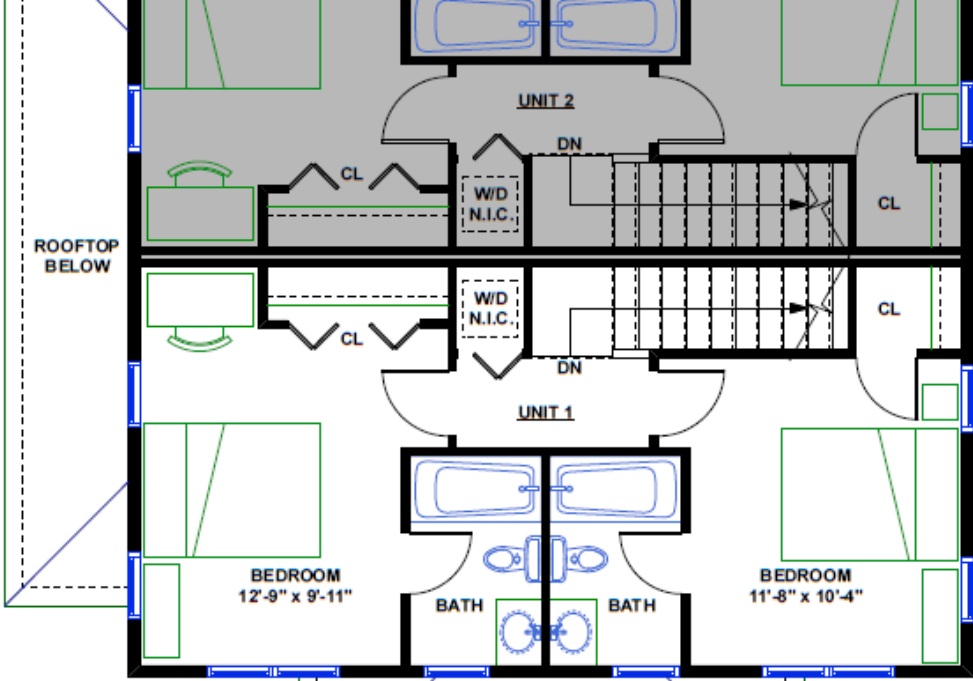
SACHEM NEIGHBORHOOD

ACCESSIBLE TRIPLEX
832 SQ. FT. 2 BEDROOM UNIT





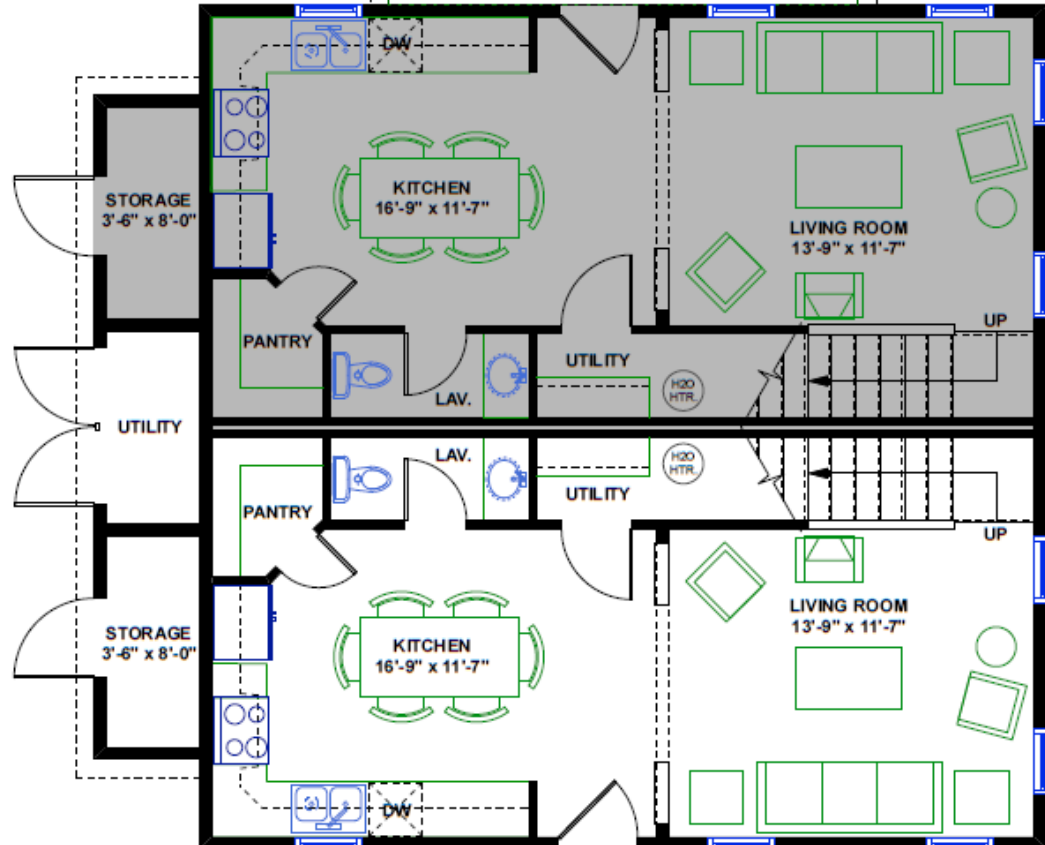
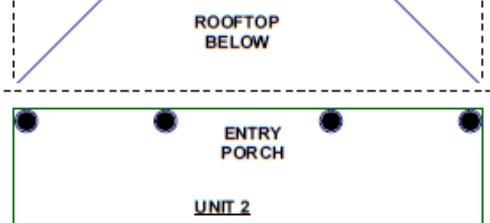




SECOND FLOOR



SACHEM NEIGHBORHOOD
 BACK-TO-BACK DUPLEX 'A'
 1,024 SQ. FT. 2 BEDROOM UNIT



FIRST FLOOR



SACHEM NEIGHBORHOOD
 BACK-TO-BACK DUPLEX 'A'
 1,024 SQ. FT. 2 BEDROOM UNIT

